



# EverydayCARE®

## Group Employer Benefit Summary

Managed by Redirect Health and



SIMPLE AND TRULY AFFORDABLE HEALTHCARE FOR  
**2 TO 19** ELIGIBLE EMPLOYEES AND **THEIR FAMILIES**

# We Put People First!

## Care Navigation works for everyone.

Finally! Healthcare on your terms – access care anytime, from anywhere, 24/7/365.



### Everything You Want in a Healthcare App – and More

-  Access Your ID Card(s)
-  Speak with a Medical Provider
-  Access Plan Details
-  Renew Prescriptions
-  Update Your Information
-  Submit receipts or billing questions

### Start with the Redirect Health Member App

- ✓ Available to answer any questions 24/7/365 in English and Spanish
- ✓ If you have a medical need simply use the Member App, call or text
- ✓ Our Care Team is made up of healthcare experts and medical providers




### We Navigate and Coordinate Your Care

- ✓ We'll help you determine if virtual, in-person, urgent, or emergency care is needed
- ✓ Connect to a virtual medical provider at a convenient time for you who will determine if further in-office care is needed
- ✓ We'll assist with any next steps, such as in-office visit scheduling or filling prescriptions at a nearby pharmacy so you never waste any time

### Follow-Up that Matters

- ✓ We find you the right level of care to address your medical needs, so you never pay more than you should
- ✓ Whether you had a virtual or in-person visit, we follow-up after your visit to make sure your care plan is staying on track
- ✓ Ever have a question? The Care Team is available 24/7/365



Pricing	Primary Member:	EverydayCARE <sup>®1</sup> Routine Care	EverydayCARE <sup>®1</sup> Hospitalization	EverydayCARE <sup>®1</sup> Hospitalization PLUS
		Any Age	Any Age	Any Age
Member Only		\$150	\$415	\$515
Member + Spouse		\$270	\$820	\$1,025
Member + Child(ren)		\$270	\$850	\$1,060
Member + Family		\$400	\$1,200	\$1,490
Multiplan  PHCS Practitioner Network (or add a doctor 48 Hours prior to visit) <sup>2</sup>		✓	✓	✓
Routine Care				
<ul style="list-style-type: none"><li>✓ Virtual Primary Care (24/7/365)</li><li>✓ In-Office Primary &amp; Urgent Care</li><li>✓ Pediatric Care</li><li>✓ Annual Adult Physical<sup>3</sup> &amp; Well Child<sup>3</sup></li><li>✓ Chiropractic (12 free visits per year)</li><li>✓ X-rays</li></ul> <b>\$0 copay</b> Virtual and In-Network Office Visit with Pre-Authorization <b>\$20 copay</b> <sup>4</sup> Out-of-Network Office Visit with Pre-Authorization <b>\$50 copay</b> <sup>5</sup> In-Network or Out-of-Network Visit without 48 Hour Preparation/Pre-Authorization	✓	✓	✓	
<b>\$0 copay</b> Labs <a href="https://RedirectHealth.com/labs">RedirectHealth.com/labs</a>	✓	✓	✓	
<b>\$0 copay</b> Mental Health Tele-Counseling Pre-authorization REQUIRED	✓	✓	✓	
<b>Rx &amp; Immunizations</b> (\$10, \$25, \$50, \$100) <a href="https://RedirectHealth.com/rxformulary">RedirectHealth.com/rxformulary</a> Copays may vary depending on pharmacy location, quantity, and dosage	✓	✓	✓	
Specialist / Advanced Imaging / Hospital				
<b>Specialist Consults &amp; Care</b> <b>\$50 member responsibility</b> <sup>5</sup> with 48 Hour Pre-Authorization	Care Navigation Only  Appointment preparation, coordination, navigation, alternative funding management, and pre-negotiations  100% Member Responsibility	✓	✓	
<b>\$50 member responsibility</b> <sup>5</sup> MRI, PET, CT scans, ultrasound, colonoscopy, mammogram and other imaging		✓	✓	
<b>Hospital Care - Inpatient &amp; Outpatient</b> <sup>6</sup> <b>Individual</b> – (non-embedded) plan year \$2,000 initial member responsibility 20% co-share   \$4,000 out-of-pocket max <sup>4</sup> <b>Family</b> – (non-embedded) plan year \$4,000 initial member responsibility 20% co-share   \$6,000 out-of-pocket max <sup>4</sup> <b>Emergency Room</b> \$500 + 20% member responsibility		✓	✓	
<b>Excluded Services</b> <sup>7</sup> Pre-existing conditions, organ transplants, dialysis, skilled nursing, advanced psychiatric care, and specialty and non-formulary medications	Care Navigation Only  Appointment preparation, coordination, navigation, alternative funding management, and pre-negotiations  100% Member Responsibility	Chemotherapy medication <b>\$30,000 sharing limit</b> <sup>8</sup> Dialysis <b>\$10,000 sharing limit</b> <sup>8</sup> Skilled nursing <b>\$5,000 sharing limit</b> <sup>8</sup> Air ambulance <b>\$5,000 sharing limit</b> <sup>8</sup> Pre-existing exclusions apply <b>12 month look back</b>		
Guidelines				
ACA Compliance Satisfies Penalty A (MEC)	✓	✓	✓	
Minimum Employer Contribution	100% of Employee Only	50% of Employee Only		
Minimum Employee Participation	50% of Full-Time Employees			

<sup>1</sup> EverydayCARE is an ERISA self-funded insurance plan managed by Redirect Health exclusively for members of the Modern Business Council. The captive risk pool is managed by Newpath Mutual Insurance Company and the Medical Cost Share risk pool is managed by Newpath Medical Inc., a Wyoming Health Sharing Ministry organized pursuant to Wyo. Stat. Ann. §26-1-104. See program guide for details. <sup>2</sup> Any doctor who accepts the Redirect Health Usual, Customary & Reasonable (UCR) Agreement can be in-network. <sup>3</sup> Routine physical/exam; gynecological exam; mammogram; pap smear; prostate testing(PSA); other routine lab and immunizations. <sup>4</sup> Eligible benefits subject to initial employee responsibility counts toward max out-of-pocket. Excludes prescription drug benefits, pre-existing conditions, and subject to program sub-limits. This overview is intended only as an illustration of the benefit plan design. Please refer to your Plan Document for actual coverage, limitation, and exclusion provisions. <sup>5</sup> Maximum allowable is 140% of Medicare allowable. <sup>6</sup> Pre-authorization REQUIRED for ALL NON-EMERGENCY Care. <sup>7</sup> See Membership Guidelines and Summary Plan Document (SPD) in the app. <sup>8</sup> Maximum sharing after initial member responsibility.

## How the plan works

Protect your company and your employees from high-dollar medical expenses

### 1 Plan Compliance

Your company plan is set up to comply with ERISA and the Affordable Care Act (Penalty A). The risk pools are managed by Newpath Mutual Insurance Company and Newpath Medical Inc.

### 2 Plan Management

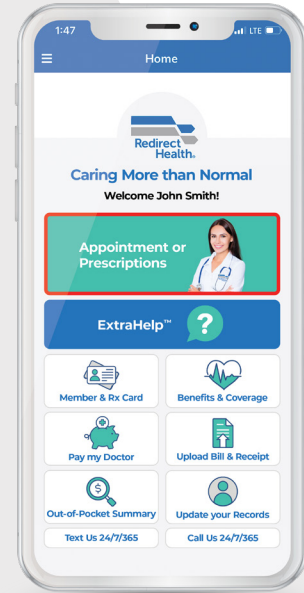
Redirect Health manages the program with the extra care your employees need - Appointment Preparation, concierge access, coordination, navigation and pre-negotiation.

### 3 Predictive Healthcare

Even before your plan's effective date Redirect Health starts learning about your employees' healthcare needs and the obstacles that may get in their way. Proactive, predictive and smart healthcare.

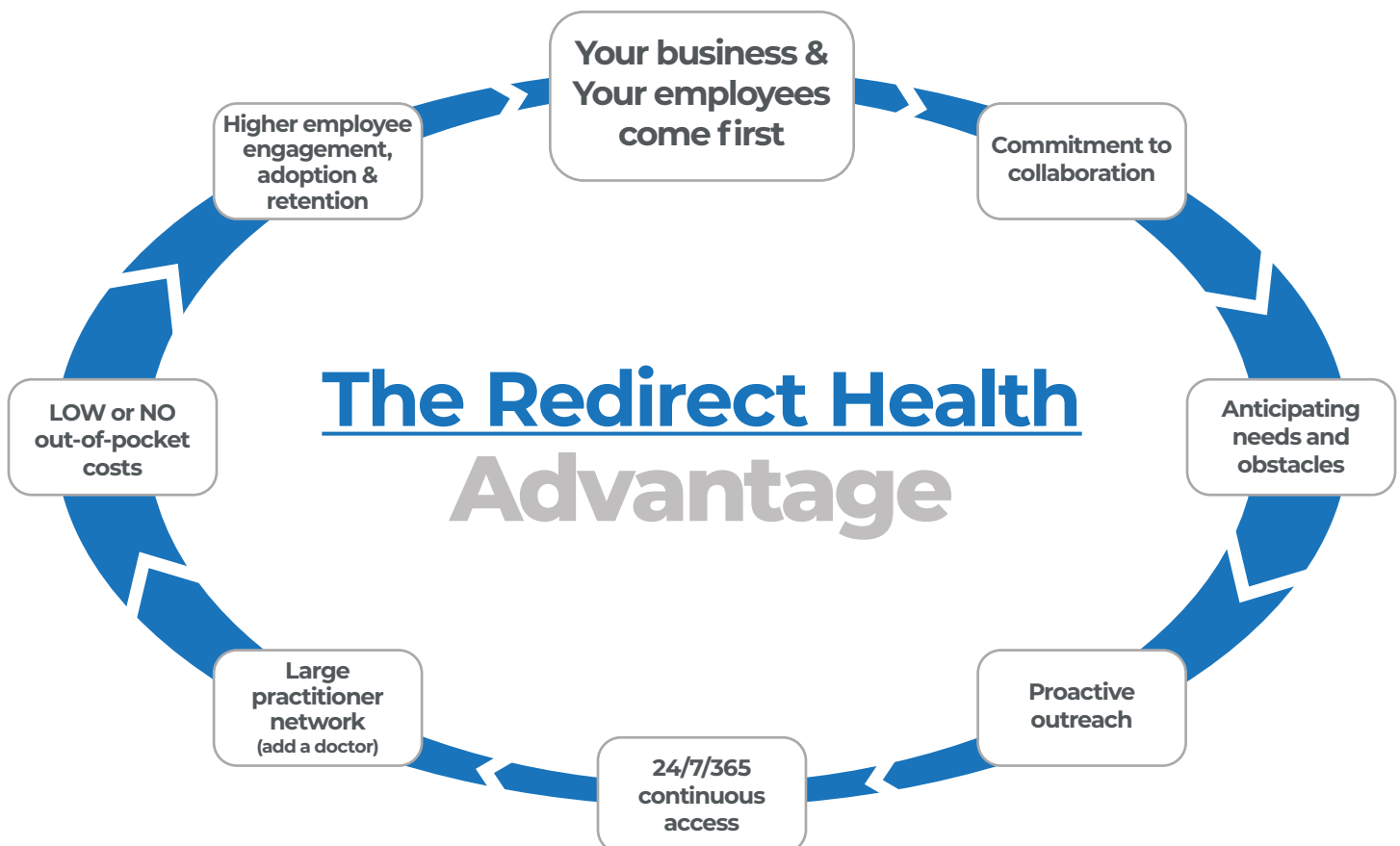
### 4 Contact us First

Your employees always use the [Member App](#) first (available 24/7) so they can schedule the quality healthcare they need quickly with the lowest out-of-pocket costs. Most times your employee's EverydayCARE costs will be \$0 - that's what we're aiming for. Always the right care at the right price.



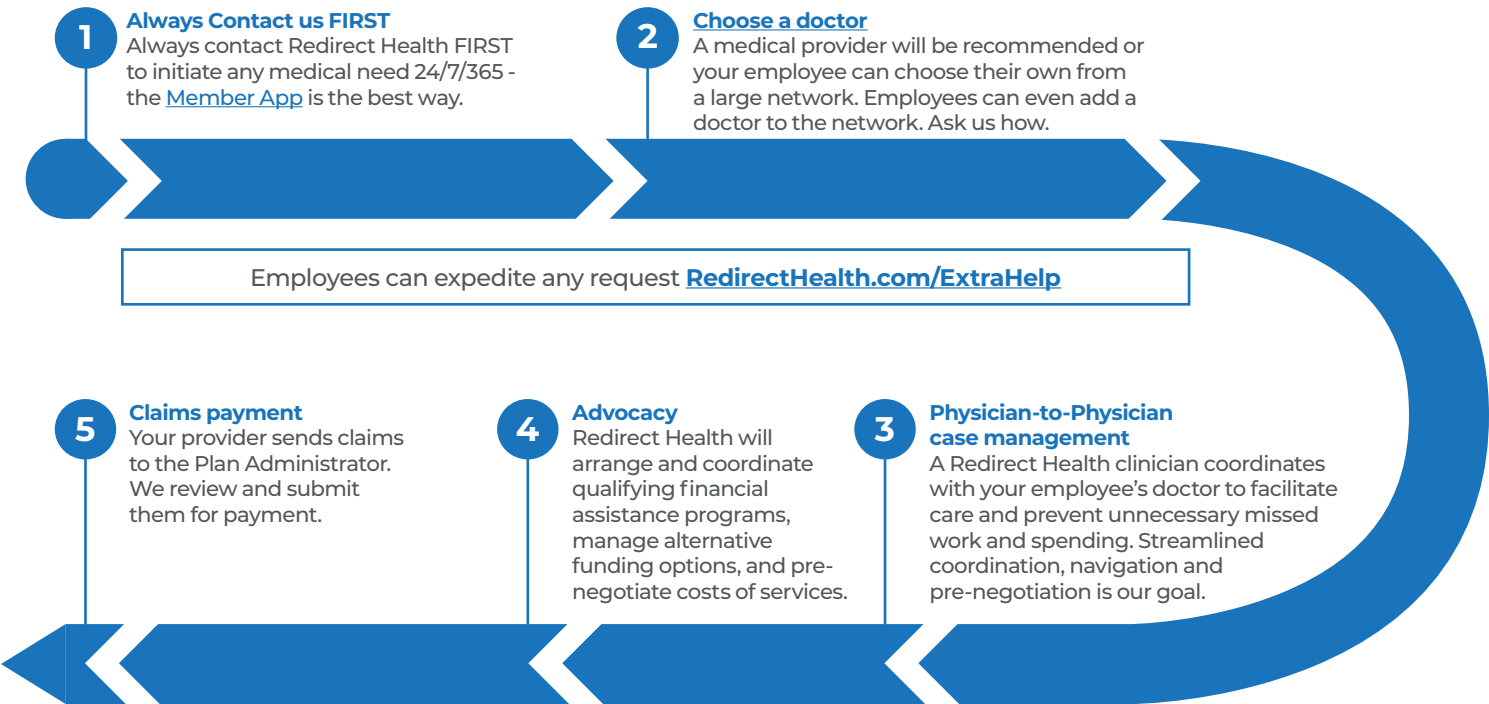
## What makes Redirect Health unique

Your employees always get the right care at the right price.



# How Needs are shared with the community

Your Redirect Health plan protects your employees from high-dollar medical expenses



# How Pre-Existing Conditions are shared

A condition is considered pre-existing for an employee or dependent if symptoms or treatment have occurred within the 12 months prior to joining the Medical Cost Share. See the Membership Guidelines for detailed description of what will be considered a pre-existing condition. **Controlled diabetes, hypertension, high cholesterol, seasonal allergies and intermittent asthma will not be considered pre-existing when reported prior to membership effective date.**

Conditions beginning after an Employee's effective date will be shared after paying their \$2,000 initial member responsibility then 20% with a maximum out-of-pocket of \$4,000\* per year. See the Membership Guidelines for sharing rules.

**Additional Sharing Restrictions**  
See Member Guidelines for detailed shareable restrictions.

Pre-existing conditions become eligible for sharing based on members' tenure with the plan, as indicated by the following graduated sharing schedule:

Time After Membership Effective Date	Shareable
First 12 months	Not shareable
Months 13-24	Shareable to \$25,000
Months 25-36	Shareable to \$50,000
Month 37 and after	Shareable to \$125,000

\* Excludes prescription drug benefits and subject to program sub-limits.



## Resilience PRO by Orriant Mental Wellness

Life can be stressful. The path to mental wellness starts right here.

**\$0 COPAY  
TELE-COUNSELING**

**resilience** PRO  
BY ORRIANT

Fully integrated with your  
Redirect Health medical team



### With the support of:

- Mental Wellness Consultants
- Life Coaches
- Mental Health Crisis Counselors 24/7

### Get help navigating life's challenges

Resilience PRO provides Redirect Health members effective tools, programs, suggestions, and coaching to help navigate the ups and downs of emotional and mental health. Resilience PRO provides gradual and measured behavioral changes – a new personal journey.

### \$0 COPAY Consultations via video or telephone

Schedule appointments 8 am to 5 pm MT (weekdays)  
or, call any time in the event of an urgent crisis.

- **Appointments last for up to 30 minutes.**
- **Consultations are available in both English & Spanish.**

#### Resilience PRO will help with any of the following:

- |                  |                        |                 |
|------------------|------------------------|-----------------|
| • Depression     | • Stress/Anxiety       | • Relationships |
| • Grief/Trauma   | • Isolation/Loneliness | • Job Issues    |
| • Financial Woes | • Emotional Struggles  | • Well-being    |
| • Addictions     | • Coping Skills        | • Anger         |
| • Self-esteem    | • Obsessiveness        | • And more      |

**Contact us 24/7/365 through the App to schedule care**

## 2nd opinion program

When you're diagnosed with a serious condition, everything is different. Priorities change. Who can you trust? How should you think about your time, money, job, and the doctors you will need.



### There's rarely only one pathway when you have a serious condition.

Our program guides you through a simple and easy process that helps you know all your options. So you and your family can make the wise and smart decisions right for you. **But always with Redirect Health's Medical Director right at your side the entire time.** Always working with your doctors to keep everything highly organized and timely. Making sure you always get the right care. And we know finances and affordability matter, so count on your team to make sure your coverage is optimized so out-of-pocket costs are minimized.



### Redirect Health's 2nd Opinion Process

#### Step 1: Preparation

Let us do the work. Redirect Health's expert care team will work with your doctors to prepare for your 2nd Opinion virtual consultation. Organizing appointments for x-rays, MRI's, lab work, and whatever else you need.



#### Step 2: Discovery

Join a live video consultation with Redirect Health's Medical Director and the appropriate specialist as they discuss your options and choices for the best care and outcome. Imagine having a trusted doctor at your side as the various testing and treatment pathway options are discovered.

And invite anyone you want – a family member, another doctor? This meeting is for you. It will be recorded so you can watch and share with whomever you wish.



#### Step 3: Deciding Together

There's no hurry. Sleep on what you just experienced. Then discuss your options and choices with Redirect Health's Medical Director. So you can decide together what makes the most sense for you.

## **Augment your plan by offering:**

Health Reimbursement Account  
(HRA) for Excluded Services

Solutions for Organ Transplant

Dental/Vision

Critical Illness

Accident



[RedirectHealth.com](https://RedirectHealth.com) | 888-688-4734